

Descriptions of six new species of ELATERIDÆ, collected by Mr. Clarence Buckley during his second expedition to Ecuador; by EDWARD W. JANSON.

1. *Chalcolepidius Buckleyi*, n. sp. Pl. I, fig. 4.

C. elongatus, rufo-brunneus, squamulis griseis dense vestitus; prothorace lateribus sinuatis, bimaculato; elytris valde costatis. Long. 27 mm., lat. 10 mm.

Elongate, reddish-brown, densely clothed with silvery-grey scales; prothorax with a central longitudinal denuded polished space, and two small circular discoidal patches of reddish-brown scales. Head with a deep, broad, triangular impression in front; antennæ with the third joint short, glabrous, scarcely exceeding the second in length. Prothorax conspicuously longer than wide, convex, rather finely and remotely punctate; emarginate and with two prominent tubercles in front; anterior angles salient and deflexed; lateral margins nearly straight, slightly sinuate before the middle; posterior angles divergent, their extreme apices inflexed and embracing the shoulders of the elytra. Scutellum oblong, its basal two-thirds vertical. Elytra elongate, two and one-third times the length of the prothorax, at the base a trifle wider than it, thence gradually narrowed to the summit, rounded at the apex, sutural angle unarmed; the suture slightly elevated, each elytron with four strongly raised longitudinal glabrous ridges, the intermediate interstices faintly indicated at the base only. Underside and legs thickly covered with silvery-grey scales, a denuded central longitudinal space traverses its entire length.

Chiguinda. Two specimens.

This remarkable and conspicuous species which, in its narrow form and general aspect, closely resembles *Chalcolepis Luczotii*, should be located at the head of the genus, and thus placed in immediate proximity to that insect.

2. *Semiotus formosus*, n. sp. Pl. I, fig. 1.

S. fere ellipticus, niger, glaber, nitidus; prothorace transverso, quadriplagiato; elytris marginibus lateralibus maculisque duabus aurantiacis. Long. 26–30 mm., lat. 8–9 mm.

Nearly elliptical, black, shining; prothorax with four large orange-yellow spots, one at each anterior angle, and one on each side contiguous to the margin, behind the middle; elytra with the lateral margin and a transverse subbasal spot connected with it of the same colour. Head unarmed, rounded in front, with a few deep irregularly disposed oblong punctures, and a large deep triangular anterior impression; antennæ exceeding the thorax in length, black. Prothorax transverse, convex in the middle, with remote oblong punctures varying in size; emarginate in front, rounded at the sides, lateral margins swollen and reflexed, especially before the middle; anterior angles prominent their apices rounded; posterior angles slightly divergent, acute, deflexed; a short central polished posterior ridge before the scutellum. Scutellum transverse, pentagonal, impunctate. Elytra conspicuously wider at the shoulders than the thorax, nearly thrice its length, gradually narrowed to the summit, extreme apex truncate, sutural angle unarmed; finely punctate-striate, interstices flat, transversely wrinkled. Beneath black, shining, the four prothoracic spots and reflexed margin of the elytra orange-yellow.

Chiguinda. Two specimens.

According to the most recent, but very artificial and unsatisfactory, arrangement of the genus (Candèze, Revision de la Monographie des Elatérides, fasc. 1, p. 170, 1874), this beautiful and conspicuous species must be referred to his seventh section "AA Chaperon inerme; aa elytres biépineuses ou tronquées au bout," and placed at the head of the section, immediately preceding the Chilian *S. luteipennis*, but with which it appears to me to have but little affinity.

3. *Semiotus carus*, n. sp. Pl. I, fig. 2.

S. elongatus, nitidus; capite nigro, antice bispinoso, antennis apice flavis; prothorace sanguineo, immaculato; elytris luteis, striato-punctatis, vitta suturali marginibusque lateralibus nigris. Long. 14–18 mm., lat. $3\frac{1}{2}$ – $4\frac{1}{2}$ mm.

Elongate, shining, head black, thorax blood-red, elytra ochreous-yellow, with a sutural vitta and the lateral margins black.

Head armed in front with two acute spines, coarsely and sparsely punctate, antennæ pitchy-black, the three basal joints rufous, the three apical joints flavous. Prothorax nearly twice as long as broad, the anterior angles slightly prominent, obtuse, sides gently rounded to the posterior angles, which are obtuse. Scutellum transverse, pentagonal, impunctate. Elytra a trifle more than twice the length of the prothorax, wider at the base than it, roundly narrowed to the apex, where they are emarginate at the sutural angle and terminate in an acute spine. Beneath reddish-yellow, head, anterior portion and base of prosternum, reflexed margins of elytra, and a wide longitudinal stripe traversing the entire length of the abdomen, black; legs yellow.

Chiguinda. Eight specimens.

These specimens are variable in size but offer no difference in colouration; in seven of them the sixth abdominal segment has the apex somewhat truncate, and is furnished with two large elongate-ovate thickly punctate and sparsely pilose foveæ, separated at their basal four-fifths by an acute ridge, but confluent at the apex; in the eighth specimen the sixth abdominal segment is produced at the apex and is destitute of foveæ.

Although differing widely in colouration this pretty species is evidently allied to *S. zonatus* and *chontalems*, and will, at present, be best placed after the latter, although not in accordance with the scheme of arrangement adopted by Candèze.

4. *Eudactylus prodigus*, n. sp. Pl. I, fig. 3.

E. elongatus, rufo-aurantiacus, glaber, nitidus; prothorace quadri-punctato; elytris vitta lata suturali marginibusque lateralibus nigris. Long. 21 mm., lat. 5 mm.

Elongate, reddish-orange, smooth, shining; eyes, antennæ (except the three basal joints, which are rufous), four oblong spots on the disc of the prothorax, scutellum, a broad sutural stripe and the lateral margins of the elytra, black. Head rounded anteriorly, thickly and coarsely punctate, with a deep narrow triangular fovea in front, antennæ with the third joint fully twice as long as the second. Prothorax conspicuously longer than broad, narrowed from base to apex, the sides gently rounded, anterior angles not prominent, deflexed; posterior angles produced and divergent, acutely carinated; sparsely and rather coarsely punctate. Scutellum oblong, with large scattered

punctures. Elytra at the base a little wider than the prothorax and a trifle more than twice as long, gradually narrowed to the apex, dehiscent and acute at the tips; punctate-striate, interstices slightly convex, minutely and sparsely punctate. Underside and legs reddish-yellow.

Chiguinda. One specimen.

5. *Eudactylus castus*, n. sp. Pl. I, fig. 5.

E. luteo-rufescens, nitidus, glaber; prothorace punctato, antice valde angustato, vittis duabus nigris; scutello nigro; elytris luteis, vitta suturali alteraque marginali abbreviatis nigris. Long. 22 mm., lat. 6 mm.

Yellowish-red, shining; thorax with two discoidal black stripes; scutellum black; elytra pale yellow, the suture and external margin with an anteriorly abbreviated black stripe. Head coarsely and sparsely punctate, with a large shallow triangular fovea in front; antennæ shorter than the prothorax, black, three basal joints rufous, the third joint barely twice as long as the second. Prothorax longer than broad, very much narrowed in front, sides rounded; anterior angles rectangular; posterior angles long, divergent and acute; coarsely and sparsely punctate; with two black stripes on the disc, reaching neither the anterior nor the posterior margin. Scutellum oblong, convex, black. Elytra twice as long as the prothorax, slightly dilated at the sides towards the middle, thence somewhat abruptly narrowed to the tip, apex acute; coarsely punctate-striate, interstices convex, faintly coriaceous and very sparsely punctate; with a sutural and marginal black vitta meeting at the apex and abbreviated at about a third from the base. Underside and legs luteous. Long. 21 mm., lat. 6 mm.

Chiguinda. One specimen.

Allied to *E. Grandinii*, Cand., from Mexico, but more robust in habit, the punctuation of the head and thorax much coarser; the elytral striæ deeper and their punctures much larger, the interstices convex; the prothorax with two vittæ on the disc.

6. *Ischius biplagiatus*, n. sp. Pl. I, fig. 6.

I. aurantiacus, breviter pubescens, subnitidus; prothorace convexo, nigro-biplagiato; scutello nigro; elytris dimidia parte postica nigra, punctato-striatis, interstitiis planis. Long. 20 mm., lat. 6 mm.

Bright orange, clothed with short golden pubescence, slightly shining; antennæ, two oblong discoidal patches on the prothorax, scutellum, apical half of the elytra, underside and legs black. Head thickly and coarsely punctate, with a broad shallow frontal impression and sparse short golden hairs. Prothorax conspicuously longer than broad, convex, slightly dilated anteriorly, lateral margin rounded, coarsely punctate and pubescent at the sides, the punctures finer and sparser towards the disc; a smooth central longitudinal line terminating at the posterior margin in a glabrous tubercle; posterior angles long and slightly divergent. Scutellum oblong, rather thickly and coarsely punctate. Elytra twice as long as the prothorax, slightly dilated at the sides towards the middle, thence gradually narrowed to the apex, where they are conjointly rounded; finely striate, the striae finely punctate; interstices flat, very finely and closely punctate and with a sparse short pubescence of a golden hue on the yellow portion, black on the black portion. Beneath black, thickly punctate, with short scattered golden hairs; sides of prothorax and parapleuræ fulvous, the former with an oblong black dash; legs black.

Chiguinda. One example.

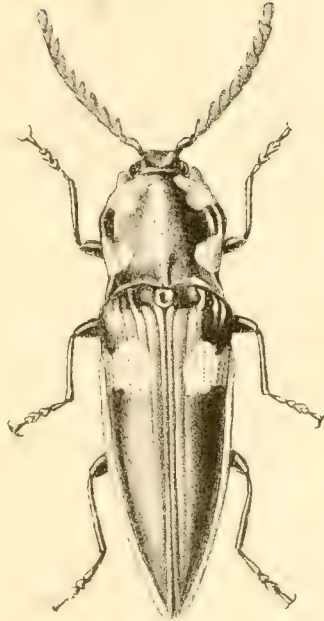
Differs from *I. Gerstaeckeri*, Cand., in the form and colouration of the prothorax, the finer punctuation of the elytral striae and their plane interstices.

NOTE.

Eudactylus discoidalis, Candèze, Bull. Soc. Ent. Belg. xxi, 1x (Elat. nouv. fasc. 2, 14, 1878), is certainly an inhabitant of south-eastern Africa, and not of equatorial America as he erroneously assumes. I have possessed a specimen of this species upwards of twenty years, taken by the late Mr. Guenzius in Natal, and am utterly at a loss to comprehend how M. Candèze can have overlooked the fact that on his last visit to me I called his special attention to this specimen as affording an interesting exception in the geographical distribution of the genus, all the previously known species being inhabitants of Central and South America, and the West Indian Islands.



2.



1.



3.



4.



5.



6.